

Model  
HVF 110, 210, 310

## Oil Indirect Fired Heaters

**CLEAN  
DRY  
HEAT!**



- High pressure operation
- Four-loop exhaust gas system™ for higher efficiency
- Output temperature 160°F
- Extra large fuel tanks for extended run times
- Runs on #1 & #2 diesel, kerosene, JP-8 or Jet A
- Low power consumption-runs on 15 amp circuit
- “One Man” maneuverability

*sold  
exclusively by*

**heat wagon**



**Tie-Down  
Brackets**



**Fuel Cap  
with Gauge**



**Preheated  
Fuel Filter  
(standard  
on 210 &  
310 models)**



**Remote  
Thermostat  
(optional)**

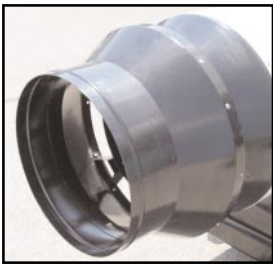


**Heavy-duty  
Duct 25'  
Length  
(optional)**

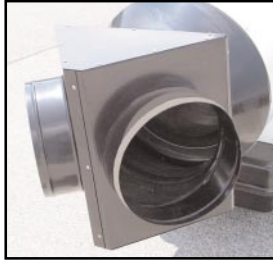
**heat wagon**

Rev. 1-09

342 N. Co. Rd. 400 E. Valparaiso, IN 46383  
219-464-8818 • 219-462-7985 • [www.heatwagon.com](http://www.heatwagon.com)



**Single Duct Adaptor (optional)**



**Split Duct Adaptor (optional)**



**Flue Duct Kit (optional)**



**Shown with 28 Gallon Fuel Cell (optional)**



**External Fuel Kit**

<b>Model:</b>	<b>HVF110</b>	<b>HVF210</b>	<b>HVF310</b>
Heat Input Btu/Hr	110,000	205,000	300,000
Output (CFM)	880	1,530	2,500
Duct Length	25	50	50
Heat Output Btu/Hr	91,900	174,900	254,400
Fuel Consumption Gal/Hr	.80	1.48	2.28
Power Supply	120v/6 amp	120v/9 amp	120v/12 amp
Flue Diameter	6"	6"	6"
Tank Capacity (Gallons)	17.2	27.7	35.7
Run Time Per Full Tank (Hours)	22	19	16
Heater Dimensions	49"L x 20"W x 31"H	57"L x 23"W x 38"H	69"L x 28"W x 38"H
Heater Weight (lbs) w/o fuel	100	180	270
Warranty	One Year	One Year	One Year
Photoelectric Flame Sensor	Standard	Standard	Standard
Overheat Switch Protection	Standard	Standard	Standard
Air Pressure Switch	Standard	Standard	Standard
Preheated fuel filter	-	Standard	Standard
Duct Diameters (single/two way)	12"	12"/12"	18"/12"
<b>Accessories</b>			
Duct (225°F Temp Rating) 25' Long	WD1225	WD1225	WD1825/WD1225
Poly Duct*	PVD12500	PVD12500	PVD20500
Duct Adaptor (single)	AR110	AR210	AR310
Duct Adaptor (two way)	-	AR212	AR312
Thermostat (with 50' of cord)	THIDF	THIDF	THIDF
Flue Kit	EF1	EF1	EF1
Fuel Cell with Quick Disconnect Hoses	PFC28KIT	PFC28KIT	PFC28KIT
External Fuel Kit	TK300	TK300	TK300



342 N. Co. Rd. 400 E. Valparaiso, IN 46383  
 219-464-8818 • 219-462-7985 • www.heatwagon.com