

SPECIFICATIONS

GENERAL	Personnel Bucket	Crane
Working Height	36' (11.00 m)	31' (9.45 m)*
Rated-Platform Height	30' (9.14 m)	----
Platform Reach from Center of Rotation	24' (7.32 m)	21' (6.40 m)
Stowed Travel Height	6'-6" (1.98 m)	6'-6" (1.98 m)
Stowed Travel Width	6'-4" (1.93 m)	6'-4" (1.93 m)
	6'-1" (1.85 m)†	6'-1" (1.85 m)†
Stowed Travel Length	22' (6.71 m)	22' (6.71 m)
Rated Load Capacity	300 lbs. (136 kg)	300/500 lbs. (136/227 kg) **
Shipping Weight	2750 lbs. (1250 kg)†	2750 lbs. (1250 kg)†
	2950 lbs. (1340 kg)	2950 lbs. (1340 kg)
Tongue Weight	140 lbs. (64 kg)	140 lbs (64 kg)
System Operating Voltage	12 VDC	12 VDC
Minimum Temperature for Operation	0° F (-18° C)	0° F (-18° C)

HYDRAULIC SYSTEM

Hydraulic Fluid	Dexron III
Hydraulic Fluid Capacity	16 qt. (15.1 L)
Hydraulic Tank Capacity	12 qt. (11.4 L)
Hydraulic System Rated Pressure	2500 PSI (17.24 MPa)
Normal Operation Pressure	700 PSI (4.83 MPa)
Maximum Operating Pressure	1350 PSI (9.31 MPa)***

* At point where boom hook is 8 feet from center of rotation.

** 500 lb. (227 kg) rating at full retraction only (inner arc - Figure i-2).

*** Should be 1100 PSI (7.6 MPa) on 534 Models.

† Unit with Jack-Type outriggers

MINIMUM VEHICLE TIPPING LOAD, HORIZONTALLY EXTENDED

On level ground (1-1/2 x rated load)	450 lbs. (204 kg)
On 5° slope (1-1/3 x rated load)	400 lbs. (182 kg)

BUCKET TRAVEL

Boom Travel 0° to + 80° (Hydraulically Operated/Electrical Limit Switch)

Top section extends 9' (2.74 m)

Rotation 350° non-continuous with Electrical Limit Switch

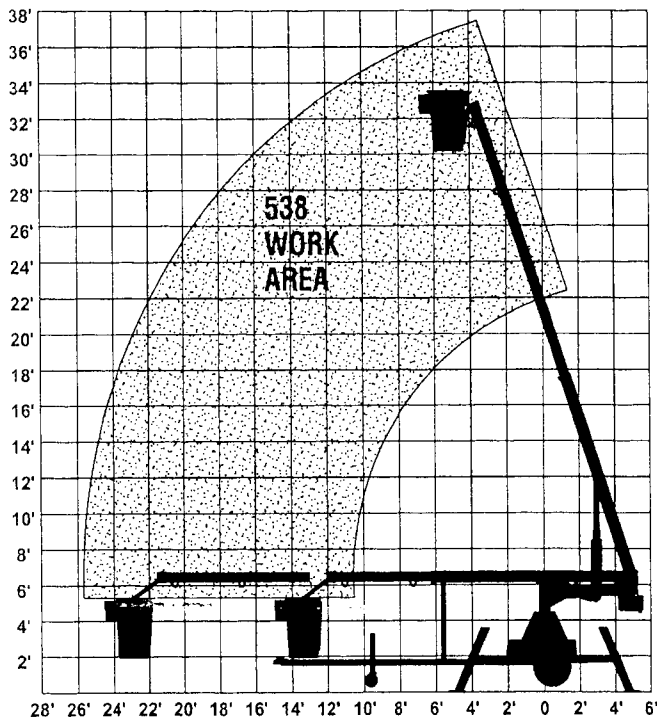
NOTE: UniLift Model 538 Lift/Cranes are designed to comply with ANSI Standard A92.2. Dealers, owners, users, operators, renters, lessors and lessees shall comply with the appropriate section(s) of ANSI Standard A92.2. Use of products must conform to safe practice and applicable statutes, codes and ordinances. Drawings are illustrative only and do not necessarily depict exact configuration of products offered at a particular time. Specifications contained herein are subject to change without notice.

UNIVERSAL CRANE

Two (2) anchor points are provided for lifting loads up to 500 pounds with the personnel bucket removed. The inner lanyard ring has a 500 pound load rating with the boom fully retracted. The outer lanyard ring has a 300 pound crane-load rating in any position. (See Figure i-2) *Note: The 500 pound load rating is ONLY during crane operation, and ONLY on the inner ring with the boom fully retracted.*

WARNING: NEVER LIFT OVER SPECIFIED WEIGHT OR TIPPING CAN OCCUR, CAUSING SERIOUS INJURY OR DEATH TO OPERATOR.

PERSONNEL LIFT



CRANE

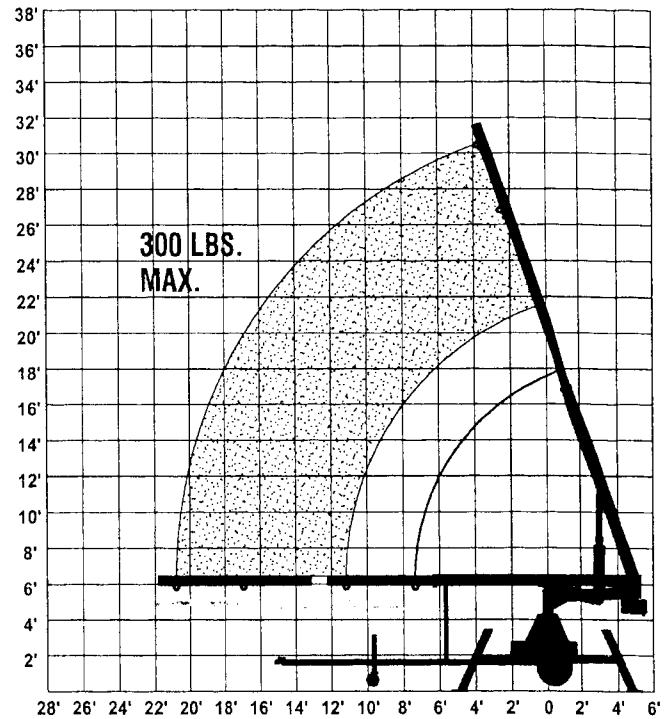


Figure i-2
Personnel Lift/Crane Work Area

DANGER
ELECTROCUTION HAZARD, STAY AT LEAST 10 FEET FROM POWER LINES. THIS UNIT IS NOT INSULATED FROM ELECTRIC SHOCK. DEATH OR SERIOUS INJURY TO OPERATORS AND/OR BYSTANDERS CAN RESULT FROM CONTACT WITH ELECTRICAL WIRES.

DESCRIPTION

The UniLift Model 538 Universal Crane and Personnel Lift functions as both a personnel carrier and crane, in one unit. A single operator can use the UniLift as a personnel carrier or a universal crane with no conversion time. The unit is also light enough to be rolled by one person.

The UniLift Model 538 consists of the following basic components:

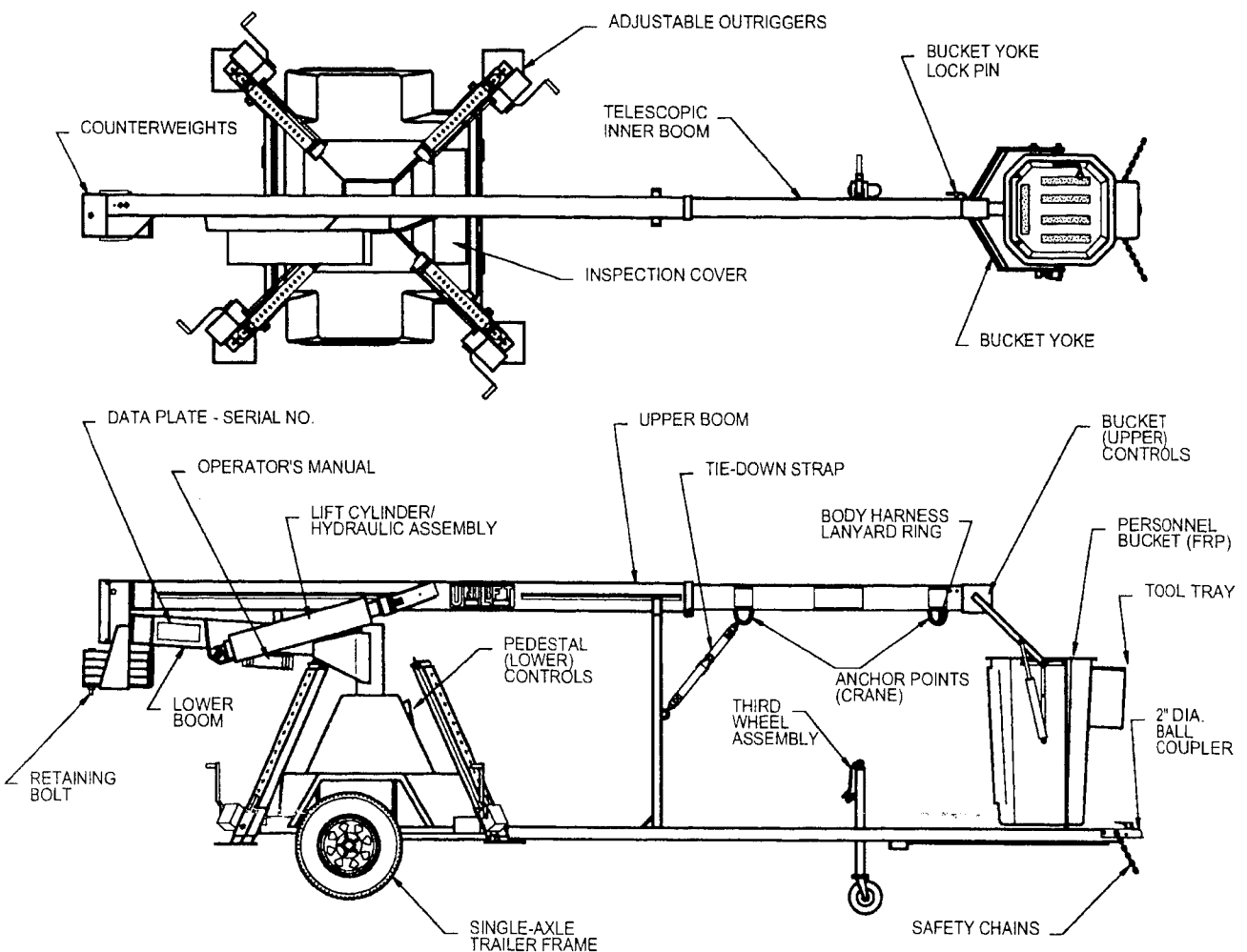


Figure i-1.
UniLift With Personnel Bucket Attached

ADJUSTABLE OUTRIGGERS

Outriggers are used for absorption of tipping load during use, and are manually set. Adjustable for up to three feet, the outriggers assure that the unit can be leveled and rest firmly on solid footing. Electrical interlocks prevent lift/crane operation until all four outriggers are fully extended and resting firmly on the ground. A green light is located on the lower control panel, indicating that all outriggers are set up on solid footing.